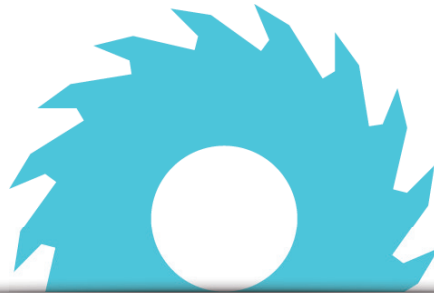


A smiling woman with long brown hair is sitting at a desk, looking towards the camera. She is wearing a light-colored sleeveless top. Her hands are on a white keyboard. A white mouse is visible on the desk. The background is a bright, out-of-focus office environment.

**drivve** | image

Drivve | Image  
**WHITEPAPER**



In this Whitepaper for our scanning solution Driveve | Image you will find all information regarding functions and benefits as well as technology and specifications. Also, we put together all the information about the different modules and editions of this software. If you have questions concerning a certain project or our solution in general, please don't hesitate to contact us.

## Index



### Functions, Benefits & Modules

Page 3

Page 4

Page 5



### Technology

Page 6

Page 7



### Specifications

Page 8

Page 9

Page 10

Page 11

Page 12



### Editions

Page 13

Page 14

Page 15





# drive | image

Drive | Image is a powerful set of feature-rich, customizable tools for capturing and processing documents embedded in your scan device. Personalized profiles offer one-touch automated capture, processing and distribution in full security. And the handling of this turbocharged intelligent scanning software is as easy as it can get!



## Reduced Costs

- Save time & money by processing documents faster
- Eliminate document shipping costs through distributed scanning
- Reduce hardcopy document storage costs
- Automate & standardize document processing
- Less time needed for document filing



## Security

- Never lose an important document again!
- Control user access to workflows at the scan device
- Apply document level security & control
- Supports full digital rights management
- Facilitates regulatory compliance & corporate governance



## Power

- Build complex workflow processes in a minute
- Parallel processing of several scan jobs
- Consistent work interface at any scan device
- Supports Single Sign-On (SSO) at your device
- Scales with your business



## Productivity

- Accelerate the processing, filing & distribution of paper documents
- Automate the capture of key business data
- Eliminate error-prone manual data entry
- Manage multilayered work tasks at the push of a button
- Create personalized workflow profiles



## Usability

- Embedded interface for leading MFPs & network scanners
- As easy as an App for your smartphone
- One touch image capture & routing
- Directly integrate scanned documents in your work processes
- Easy and fast installation, configuration and operation



## Connectivity

- Centralized administration across locations for all scan devices
- Bi-directional connectors to key business systems
- Submits captured information directly to your document management system
- Integration in your business applications & any ODBC compliant database
- Connects with your existing email and fax systems





# drive | image



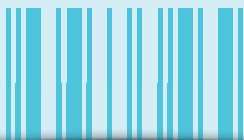
## Scanner Power Tools

- Create searchable PDF or PDF/A documents
- Search your central filing structure from the device
- Automated document separation - even by barcode
- Send emails and faxes directly from the device



## OCR Module

- Convert images to editable formats (PDF, Microsoft® Word, Excel, etc.)
- Supports over 100 languages for best OCR results possible
- Document separation via OCR text
- Automatically extract data elements using Zonal OCR



## Barcode Module

- Supports a wide range of 1D & 2D barcodes
- Use barcodes to automatically index documents
- Trigger workflows based on barcode content
- Supports multiple, simultaneous barcode identification



## Cloud Connector Module

- Scan directly to Microsoft OneDrive®, Google Drive® and Box® and choose the file folder at the device
- Use the WebDav standard for transferring your scanned documents to cloud platforms



## Database Connector

- Integrate to any ODBC compliant database
- Automatic indexing using data pulled from a database
- Supports database look-ups from the scan device
- Link to back office CRM and financial systems



## SharePoint Connector

- Scan directly into existing SharePoint® filing structures
- No installation of additional components required
- Auto-generate new filing structures
- Automatically update index fields in SharePoint®





## Exchange | Fax Connector

- Bi-directional integration into Microsoft® Exchange
- Access personal address books at the scan device
- Seamless output to fax servers & services
- Find sent emails in your Sent Items folder



## Lotus Notes | Domino Connector

- Bi-directional integration to IBM® Lotus Notes® & Domino®
- Access Lotus Notes address books at the scan device
- Scan to your personal "Drafts" folder
- Find sent emails in your Lotus Notes "Outbox"



## Print Management Connector

- Connect selected Print Management Systems with Drive | Image
- Login once only to your Print Management System and Drive | Image via Single Sign-on (SSO) function
- Access to personal Drive | Image profiles directly after authentication



## Desktop Client

- All Drive | Image functions are available from your Windows® Desktop
- Processing of existing documents from the local workstation
- High variety of input- and selection-options for Drive | Image profiles
- Interactive scanning for TWAIN scanners





## Technology

Drive | Image is our solution for intelligent, customizable scanning and the processing and electronic distribution of your documents. Drive | Image offers feature-rich modules to compile a customized scan middleware and a tool kit to equip the input panel of your scan device with personalized scan profiles. Initiate multilayered scan processes at the push of a button. Optimize work processes thanks to intelligent capturing, read-out, processing and distribution of documents and contained information - at a maximum of security.

In order to help you decide whether Drive | Image is the perfect scan solution for you, we put together all functions and characteristics of Drive | Image in the following overview:

### XHTML

XHTML-based forms are used to display input fields on the MFP panel (embedded solutions) and a wide variety of input controls can be shown. That way, various input options for individual control over a scan job can be created.

### SOAP

Communication between Drive | Image and an embedded MFP is based on Simple Objects Access Protocol (SOAP), a standard, well-known technology for data transfer between different systems.

### Imaging/Compression/Format

Drive uses a high-performance image-enhancement technology with more than 15 years of development behind it. Advanced image cleaning and enhancement features. All industry-standard compression types are available, such as LZW, JPEG, Tiff G3, G4, and more. Export to wide variety of formats, such as Tiff, JPEG, PCX, PDF, DCX, bmp, PNG, and many more.

### Bar code Recognition

Bringing high-end bar code recognition to the scanning process opens up a whole new world in document automation. The Drive | Image bar code recognition includes 2D bar code recognition, which is often used to store a large amount of data (up to 3000 characters). With Drive | Image offers the possibility of a automated document-routing technology based on bar code recognition.

### XML/XSL

The Extensible Markup Language (XML) is often used to transfer information, for example from scanned documents, to third-party systems. With Drive | Image you can save all the information contained in a document - including full-text OCR - in a XML file. The integrated Extensible Stylesheet Language (XSL)-based transformation engine can output any kind of XML format, which enables Drive | Image to output any required XML structure required by a third-party DMS or database system. Even easier than using XSL-templates is the transformation of the XML-output, using the Replace -Function. Output values are simply inserted into an example file of the target system.

### OCR

Drive | Image offers a high-performance Optical Character Recognition (OCR) recognition with a variety of export formats. That way, you can transform scanned documents to popular editable formats such as Microsoft Word or Excel. Drive | Image also supports the new format for long-term preservation (PDF/A). On top, Drive | Image offers encryption and security/password protection for PDF documents as well as zonal OCR including automatic page separation via OCR-results.





## **Datenbank Integration / SQL**

The usage of database standard Open Database Connectivity (ODBC) is supported by 98% of all databases on the market today. Highly flexible configurations are achieved by using the SQL language to access database content.

## **LDAP**

The Lightweight Directory Access Protocol (LDAP) is supported by most email servers, such as Microsoft Exchange, Novell Groupwise, Lotus Notes, Linux and Unix systems. Drivve | Image uses LDAP not only for integration with email servers but also in a general database approach. For example, Drivve | Image uses the LDAP server to query address data from a Lotus Notes database.

## **Exchange Server**

The Microsoft Exchange Server connector integrates perfectly with Microsoft Outlook. Sent emails and faxes are stored in your "Sent" mailbox.

## **SMTP Email**

Simple Mail Transfer Protocol (SMTP) enables Drivve | Image to send email using any email server, whether Linux, Exchange Server, Unix, Novell, Lotus Notes, or Mac.

## **FTP**

The Standard internet file-transfer protocol (FTP) for data transfer over TCP/IT networks is used by most network servers and can be found on all platforms. For Drivve | Image it offers a variety of opportunities to communicate with third-party systems.

## **Active Directory**

Drivve | Image offers user and password authentication based on Microsoft's Active Directory.

## **SharePoint® Services**

Microsoft Windows SharePoint Services is a versatile technology that helps teams stay connected and productive by providing easy access to the people, documents, and information they need. SharePoint Services also provides a foundation platform for building Web-based tools and services to meet individual business needs.





## Specifications



### Drivve | Image - an overview

- Two-way communication between Drivve | Image and scanning devices based on Canon®, Fujitsu®, Konica Minolta®, DEVELOP®, Lexmark®, Kyocera HyPAS®, OKI sXP®, Toshiba e-BRIDGE®, Samsung XOA®, Sharp OSA® and Xerox EIP®-technologies.
- Link any device that can deliver an image file per FTP or SMB and supports SNMP to your Drivve | Image network by using a Universal Device License
- Monitor IMAP compatible inboxes by using Universal Device Licenses
- Use the Drivve | Image Desktop Client to forward documents from any TWAIN scanner to Drivve | Image
- Use the Server Processing Licenses to connect any image creating service, which is able to file image data into a folder, to Drivve | Image
- Easily create searchable PDF/A documents
- Easily create customized scanning workflows for each type of document and any type of device
- The intuitive Drivve | Image user interface guarantees consistent user experience across all embedded devices
- Drivve | Image secures vital company information with rights assignment, log-in function, and PDF encryption
- Single Sign-on (SSO) functionality
- Choose between multiple processing, indexing and input options right at the embedded device's control panel
- Use the full power and the latest standards of image processing, correction and cleaning
- Extract data from documents- from barcodes, for instance- and use it to index and autoroute your scanned documents
- Convert scanned documents to all industry standard output formats such as PDF, searchable PDF, PDF/A, JPEG, TIFF, Microsoft® Word and more
- Scan-to-Email or Scan-to-Fax directly from your device, including address list access at the embedded device's control panel
- Scan to FTP, SharePoint®, personal inboxes or databases and route documents to any location on your server
- Deep integration with Drivve | DM, Drivve's streamlined, reliable document management system
- Universal ODBC interface allows for real-time, dynamic integration with document management, collaboration, and other business applications
- Use index information for automatic file name generation and file-folder storage structure creation on your server or in SharePoint® Services
- Easy, centralized installation and configuration with easy-to-use interface
- Integrated browser simulator lets the administrator preview the interface that will be displayed to end users
- Email notifications and processing statistics help system oversight
- Easily expand Drivve | Image to meet customized or evolving needs
- Support of all ODBC (Open Database Connectivity) databases and LDAP (Lightweight Directory Access Protocol) directories







## Scanner Power Tools (SPT)

- Automatic separation of documents and output in single files by means of a blank page or 1- or 2 dimensional barcodes
- Blank page deletion: Default your scans to duplex mode (two-sided), even for single-sided documents; blank sides are deleted
- Bates stamping: To annotate and paginate documents using any kind of text or image, enter or choose Bates profile right at the device panel
- Image cleaning: De-skew, de-speckle, and remove lines, punch-hole marks and borders
- Scan to network, web folders, FTP- or FTPS-server
- Create fixed and dynamic scan targets at your network in seconds
- Autogenerate the folder structure on your FTP server (just like you can with your network folders)
- Printback feature: Process your scanned documents and print them out simultaneously
- Microsoft Active Directory® access control with group capability
- Job-build: Scan multiple documents into one output file, from either the document feeder or the platen glass
- Define mandatory input fields to ensure required information is entered before starting any process
- Browse to folder: Open folder tree, including root folder and subdirectories, at the device and limit access to secure directory lists
- Search for folders by initial letter combination (such as «in» for «invoices» or «Jan» for «January»)
- Browse to print: Browse your entire network from the device panel and immediately print out documents
- Navigate through scan jobs grouped by input, processing and output steps right at the display
- Modify scanner settings option: paper supply (simplex/duplex mode), color mode (color/grayscale/monochrome), and resolution/quality (DPI)
- File name generation: Define your file-naming convention in advance (including using variables) and use any input field that the user can fill out at the device as part of the file name, for example «department-company-document #-date & time.pdf»
- File format conversion: Convert your image files to any standard industry format
- Add metadata to any scanned document (Text, CSV, XML)
- Run an application after all processing is completed, and pass a variety of parameters to the application to initiate a third-party workflow or document-processing system
- Send emails using any standard email server
- Emailing supports multiple To, CC, and BCC addresses



## OCR Module für Scanner Power Tools

- Generate a variety of output formats such as PDF searchable, RTF, Microsoft® Word, Microsoft Excel, Acrobat®, E-Mail, HTML, XML, TXT, XPS
- Choose Microsoft Word, Microsoft Excel or text as output format and edit your scanned documents with your preferred Microsoft Office application
- Generate PDF/A output format for the long-term archiving of electronic documents
- Use Drive | Image Zonal OCR to define an unlimited number of zones on a document in order to extract text from specific areas
- Use powerful string manipulation and analyze functions on any type of extracted data
- Autorotation of upside-down scanned documents
- PDF encryption ensures that confidential information remains private
- Store secured and password-protected PDF documents
- OCR text export for third-party applications (text, CSV, XML, etc.)
- Scan documents containing different languages with multiple-language support (simultaneously reads up to 9 languages)
- Enable OCR right at the device or disable it for unreadable documents such as drawings or photos
- Support for more than 100 languages
- Automatic document separation via processed OCR-results
- Profit from extraordinary small searchable PDF files through Intelligent High-Quality Compression (iHQC™)





## Universal Database Connector

- Intelligent indexing of documents by using existing information in databases
- Display data from a database and browse information on the device panel
- Populate a scan's index fields with information pulled from the database
- Initiate an automatic search of the database after defining the number of characters to be entered by the user
- Use of Standard Query Language (SQL) giving full flexibility
- Support of all ODBC (Open Database Connectivity) databases and LDAP (Lightweight Directory Access Protocol) directories
- Pull email addresses from your database (for example CRM/ERP software) for Scan-To-Email tasks
- Eliminate manual indexing errors



## Barcode Module for Scanner Power Tools

- Use barcode content to index documents, name your files or folders
- Extract parts of a barcode data based on separator characters
- Use the Document Separation feature with a 1- or 2-dimensional barcode
- Read almost all barcode orientations: horizontal, vertical, skewed
- Detect barcodes anywhere in an image or based on the specification of a barcode location
- Define the barcode colour
- Read unlimited number of barcodes on a page or configure a maximum number of barcodes to be read
- Filter barcodes by specifying filter criteria like «begins with», «ends with», «contains», etc.



## Cloud Connector Module

- Scan directly to Microsoft OneDrive®, Google Drive®, Box® and Sharp Cloud Portal Office® and choose the file folder at the device
- Use the WebDAV standard for transferring your scanned documents to cloud platform



## Exchange | Fax Connector

- Email, fax and archive a document in one step
- Allows configuration to require user authentication
- Seamless connection between your device and fax server solutions
- Use your Exchange | Fax Connector license to send faxes from different devices
- Emailing supports multiple To, Cc and Bcc addresses
- Place sent emails in Microsoft® Outlook "Sent" box for confirmation
- Connect to email and fax address book via LDAP
- Access to personal address books, or limit access to secure recipient lists
- Combine the Database Connector with the Exchange | Fax Connector and pull email addresses from your database to send messages
- Email notification feature to inform the user when a new document is scanned to a specific destination
- Email-to-fax integration – Type in a customer's fax number and an email is sent to your fax server to initiate faxing





### SharePoint® Connector

- Scan documents into SharePoint®
- Index scanned documents at the device, then store them in SharePoint
- Automatically create a new folder in SharePoint when filing a scanned document
- Fill in customized fields in SharePoint at the device
- Automated file name generation: Define your file naming convention in advance using preferred variables
- Autogenerate the filing structure within SharePoint
- Browse your filing structure in SharePoint at the device display
- File a document in your inbox and in a SharePoint folder or project simultaneously
- File a document in SharePoint and email it at the same time
- Choose between flexible scan profiles with customized indexing and processing and fully automated scan profiles with predefined document filing at the touch of a button
- Documents scanned via Drivve | Image can be accessed over SharePoint Services from anywhere in the world
- Use email alerts to notify team members when new project-related documents are scanned into SharePoint
- Documents are scanned as searchable PDF files, facilitating collaboration within SharePoint projects
- Connect your device with an unlimited number of SharePoint Servers
- Rights assignment defines which SharePoint folders and projects can be viewed by which users at the device display



### Lotus Notes | Domino Connector

- LDAP authentication of users against the Lotus Notes | Domino Server
- Access Lotus Notes address books (via LDAP)
- Send scanned documents via email through the Lotus Notes | Domino server
- Drop sent emails into the user's sent box
- Drop emails into the sender's Drafts folder to edit the message before sending it
- No proprietary application but a standard Lotus Notes database application (.nsf)
- Exclusive use of standard Lotus Notes features and therefore compatible with all operating systems Lotus Notes runs on
- No hassle with firewalls or network routing
- Emails are processed within the Lotus Notes | Domino environment
- Use Lotus Notes | Domino features to load balance or manipulate the way emails are processed
- Use all the powerful Drivve | Image features to configure file name generation, file format conversion, etc.
- Detailed log function
- Processed messages can be auto-deleted or stored
- Delete error messages or forward them manually
- Single Sign-On support



### Print Management Connector

- Support of Single Sign-On including password storage if used with an external print management system
- Access to personal Drivve | Image profiles directly after authentication in the print management solutions
- Automatic transfer of authentication data to Drivve | Image
- If the user is logged on to the external print management system, she only has to enter the password one time - the first time she starts Drivve | Image or after the password has been changed
- If Drivve | Print and Drivve | Image are used together, the license Print Management Connector (PMC) Module is not required: In this case, single sign-on is automatically provided.



## Editions



### Desktop Client Edition

*Using the Drive | Image Desktop Client you process your digital documents right at your Windows® Desktop*

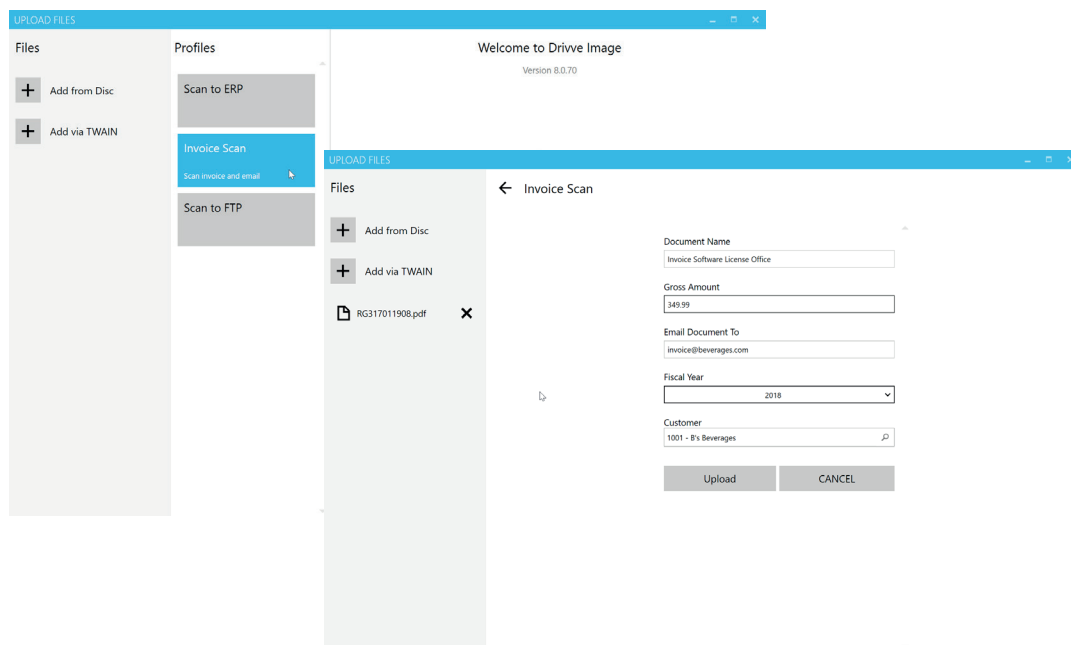
The Drive | Image Desktop Client allows indexing and preparing scanned and digital documents from the Windows® Desktop of the user's workstation. This way interactive input, otherwise processed at the MFP's display, can be redirected to the user's PC and potentially be processed there easier and more efficiently.

The Drive | Image Desktop Client makes the high variety of input- und selection-options for Drive | Image profiles available for all devices that provide a TWAIN interface.

Requirement for the direct scan from the device to the Drive | Image Desktop Client is a TWAIN-based interface. Beyond that, the Drive | Image Desktop Client provides additional ways to access and process existing documents from the local workstation.

All Drive | Image modules are available for the Drive | Image Desktop Client Edition. Therefore functionalities like OCR, file naming conventions, database lookups, bar code recognition and emailing initiated conveniently at the Windows® Desktop.

Digital documents can thereby be efficiently processed at the user's workstation to enhance your existing business workflows for paper documents.





## Generic Edition

*The intelligent scan solution – Drive | Image delivers extremely user-friendly process optimization*

Drive | Image features multiple modules that can be individually combined to optimize your scanning processes. Personalized scan profiles enable the automatic scanning, processing and forwarding of documents at the touch of a button.

Drive | Image offers you the all the benefits of razor-sharp document scans, data and barcode recognition and the creation of searchable PDFs. Data can also be transferred to Microsoft SharePoint®, document management systems or Drive | DM. Sensitive files can be protected with user rights assignment, a log-in function, and PDF encryption.

The Drive | Image Generic Edition allows you to combine a series of devices equipped with the appropriate technology from different manufacturers. You can also link Drive | Image to any scanner by means of a Hotfolder license. Define custom scan profiles quickly and simply, assign them centrally to all devices - and ensure a consistent and user-friendly way of working across the whole organization.

## **Canon** Scan Front® Edition

*The Drive | Image Canon ScanFront® Edition is especially developed for the innovative Canon ScanFront® series. This edition supports the Windows® CE based models 220, 300 and 330 as well as the web-application modus of the current generation e.g. ScanFront 400®.*

The Canon ScanFront® Edition offers you individually customizable functionality, deep integration capability and exceptional ease of use. At the push of a button you can create personalized user profiles, set complex and multiple workflows into action and send emails and faxes right to the large color display of this sleek scanner Canon ScanFront®. This Edition offers everything you need, to efficiently automate, process and store your document scans.

## **FUJITSU** Edition

*Fujitsu network scanner – Drive | Image Fujitsu Edition is the customized solution for your Fujitsu network scanner*

Fujitsu network scanners enable collaboration at its most efficient between a desktop scanner and your IT infrastructure. Your mission: Increase the efficiency of your company and optimize the communication of worldwide business environments across locations. The innovative Fujitsu models fi-6010N, N1800 and N7100 allow the usage of the complete Drive | Image potencial right at your desk: scan, archive, email, fax, index in one step - and all that via OCR, database integration and barcode recognition on the highest level. Don't like complicated scan jobs? Neither do we. With Drive | Image scanning shall become an enjoyable experience - and where could this turn out better than on a practical, efficient and cutting-edge Fujitsu scan device.

## **KONICA MINOLTA** Edition

*The OpenAPI Technologie® of Konica Minolta®*

The powerful combination of browser-compatible Konica Minolta®-Devices and Drive | Image offers all functionalities for effective capturing, processing, filing and forwarding of scanned documents. Integrate your personalized Drive | Image profiles directly into the panel of you Konica Minolta® MFP.





## DEVELOP Edition

*DEVELOP® is one of the leading brands of Konica Minolta® for small- and midsize companies in the field of modern office communication*

The support of DEVELOP®-Devices corresponds to the support of Konica Minolta®-Devices. The DEVELOP® Edition contains all Drive | Image functionalities to optimize, digitize and distribute documents. Scan processes are accelerated, security standards are observed and documents prepared for digital document management.

## KYOCERA Edition

*Hybrid Platform for Advanced Solutions (HyPAS)™ – Drive | Image Kyocera Edition multiplies the possibilities of any Kyocera HyPAS MFP.*

The Kyocera HyPAS Technologie® allows the usage of all Drive | Image modules and functionalities at the Kyocera® MFP. With comprehensive features, deep integration options and an unique user-friendly usage, the Drive | Image Kyocera® Edition makes customizing and optimizing of network scans as well as the processing and secure distribution of scanned documents easy as pie.

For those users who implement Drive | Image together with our browser-based document management system Drive | DM, Drive seamlessly delivers a complete HyPAS™-enabled document ecosystem to your Kyocera MFP display.

## Lexmark Edition

*Lexmark Embedded Solutions Framework (eSF)® 3.x to 6.x*

Benefit from increased efficiency and productivity for your company by using the combination of our scan solution Drive | Image and Lexmark®-devices with Android-App Framework. The usage of Drive | Image on your Lexmark device offers the full flexibility regarding document indexing and organization. Furthermore the scan solution guarantees powerful and secure processing and distribution of scanned documents to the filing location of your choice. This could be within network, SharePoint® Services or a document management system like Drive | DM. The Drive | Image Lexmark Edition makes managing your document tasks as simple as it's supposed to be.

## OKI Edition

*For sXP (smart Extendable Platform®) – Drive | Image OKI Edition for intelligent scanning with your MFP*

Utmost flexibility when indexing and organizing documents: Drive | Image OKI Edition guarantees powerful processing and transfer options for scanned documents to the filing location of your choice. Predefine multiple and complex workflows based on your specific needs. Start a process with a single touch on the OKI MFP panel. Operating our powerful and sophisticated imaging solution is as easy as pie! The OKI edition simplifies document related processes to a minimum for ease of use.

## SAMSUNG Edition

*eXtensible Open Architecture (XOA)® – The efficient and powerful scan solution for Samsung® XOA®-enabled MFPs.*

The Extensible Open Architecture (XOA) technology enables the intelligent communication of Samsung MFPs with the surrounding infrastructure and therefore the seamless integration in business processes.

The feature-rich scan solution allows you to create and initiate predefined multilayered scan processes in an intuitive, easy and quick way. Right from the Samsung touch screen, the user has flexible, personalized input options for the individual document capture and processing and initiates a scan process. Samsung users benefit from all Drive | Image functions, such as advanced image cleaning, individual filename generation, blank-page deletion, barcode recognition, personalized email distribution and zone OCR.







## SHARP Edition

*Open System Architectur (OSA) – Drive | Image Sharp Edition uses the full potential of Sharp's OSA*

Redefining the very concept of an MFP, the Sharp OSA platform opens the door to a broad array of value-added functionality and flexibility. It is designed for you to work more efficiently and individually.

By accessing integrated applications directly from the LCD panel, Drive | Image Sharp Edition gets you working more productively. Your MFP and Drive | Image work together interactively - which enables various input options at the device panel to individually control the scan process.

In combination with our document management Drive | DM, Sharp users benefit from a comprehensive document management - from document capturing all the way to archiving. The Drive | Image Sharp Edition allows you to fully integrate your MFP into your system architecture. Sharp OSA and Drive | Image work together to turn your MFP into a gateway to your network, providing fast, flexible access to documents no matter where you are in the office — across the room or across the globe. With such comprehensive control, you'll be managing your document workflow easily, efficiently and more securely.

## TOSHIBA Edition

*for e-BRIDGE® Open Platform – The intelligent and intuitive solution for Toshiba e-BRIDGE-enabled MFPs.*

Drive uses all the possibilities of Toshiba's innovative e-BRIDGE technology to provide the seamless integration you need to make powerful document imaging and workflow possible. With the Drive | Image Toshiba® Edition you get a full suite of customizable modules to easily streamline all your document-based processes for more efficient information sharing and storage.

Benefits include multiple image-processing powers such as blank-page separation, advanced image cleaning, bar coding, Bates stamping, email blasting, and fax broadcasting, etc.; personalized profiles offering one-touch automated capture, processing, and distribution in full security; customized scanning workflows for each type of document; deep integration with existing information resources; and direct access to Drive | DM, Drive's powerful browser-based DMS, right from the MFP control panel. When Drive | Image and Drive | DM are implemented together, Toshiba users can take advantage of all-in-one solution — a complete document ecosystem.

## XEROX Edition

*Extensible Interface Platform (EIP)™ – Award-winning Drive | Image Xerox Edition has pushed the EIP envelope*

The Xerox Extensible Interface Platform (EIP) is a software platform inside many Xerox MFPs that enable independent software vendors and developers like Drive to easily create customized documents management solutions that you can access right from the MFP touch screen. This powerful Web service platform allows for some rather amazing possibilities, and Drive has indeed pushed the EIP envelope with the Drive | Image Xerox Edition - we won the coveted Most Innovative EIP Partner award for 2008! Of course, the full range of functionality that customers everywhere have come to expect from Drive | Image is EIP enabled.





[www.driveve.eu](http://www.driveve.eu)

[sales@driveve.de](mailto:sales@driveve.de)

© Copyright 2018 – Driveve GmbH & Co. KG – All rights reserved.

Driveve® is a registered trademark in certain jurisdictions and Driveve™, Driveve | Image™, Driveve | Print™, Driveve | KM™ and Driveve | DM™ are trademarks of Driveve, Inc. Driveve images, logos and copyrights are the exclusive property of Driveve GmbH & Co. KG.

All other brands and their products are trademarks or registered trademarks of their respective holders and should be noted as such.

All information is subject to change without notice.